

Strobe Annunciator

1. Descriptions

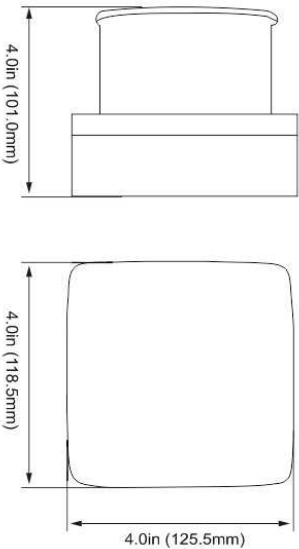
The strobe sounder is an ideal alternative to fire bells and for external use. It is housed in an attractive horn comprised of flame retardant ABS. Eight selectable tones and a volume control are featured to meet most requirements.

The strobe is also available with transparent poly-carbonate front which will provide both visual and audible alarm.

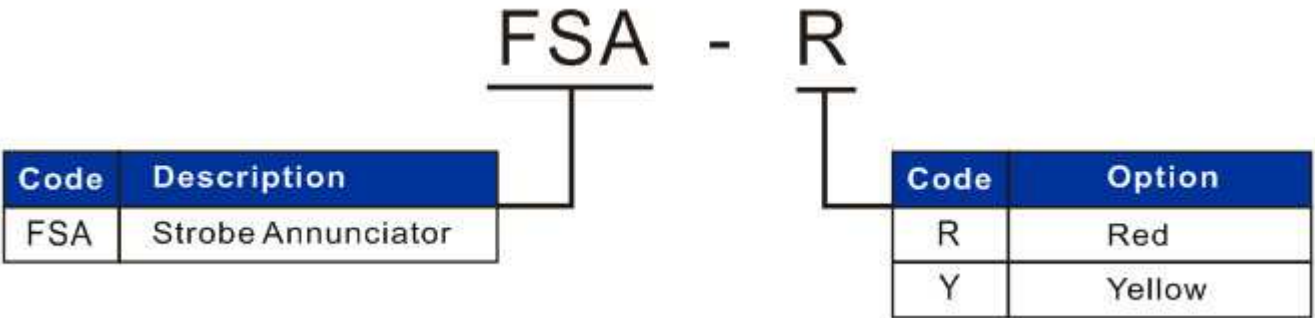


2. Specifications

Color	Red/Yellow
Operating voltage	24V AC/DC
Alarm current	≤40mA
Operating temperature	-20°C~+60°C
Waterproof rating	IP65
Flash	60±3 times/min
Sound	8 different tones
Operating humidity	≤95% RH
Sound	100db(within 1m)
Size	124*130*100mm
Weight/pcs	0.36kg

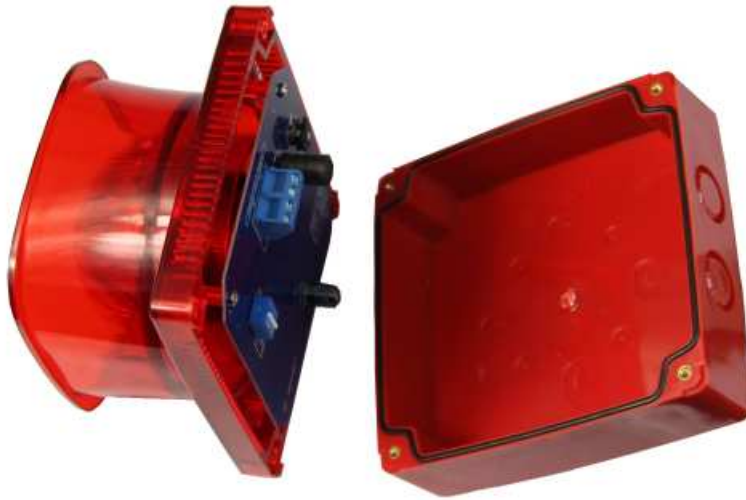


3. Part Number Scheme



4. Features

- 8 adjustable tones
- Adjustable volume



Model		
Part No.	FSA-Y	FSA-R
Color	Yellow	Red
Sound Output	See current consumption table	
Operation Voltage	24V AC/DC	
Quiescent Current	0mA	
Alarm Current@24V	See current consumption table	
Operating Temperature	-20°C to 60°C	
Minimum Continuous Temperature	0°C	
Maximum Humidity	95%RH non condensing	
IP Rating	IP65	
Size	124*130*100mm	

DIL SWITCH SETTINGS (SW4 N/A)					
1	2	3	Tone Description	dB Level	Current (mA)
Off	Off	Off	Sweep Negative 1200-500 Hz In 1 Second	101 (+/- 2dB)	27
On	Off	Off	Alternating 554 and 440Hz 0.5s Each	98 (+/- 2dB)	20
Off	On	Off	Continuous 660Hz	101 (+/- 2dB)	27
On	On	Off	Alternating 554Hz @ 0.1s/440Hz @ 0.4s	98 (+/- 2dB)	19
Off	Off	On	Intermittent 970Hz @ 0.5s On/Off	98 (+/- 2dB)	20
On	Off	On	Continuous 970Hz	103 (+/- 2dB)	29.3
Off	On	On	Sweep Positive 800-970Hz	103 (+/- 2dB)	38
On	On	On	Alternating 800 and 970Hz @ 0.25s Each	102 (+/- 2dB)	35