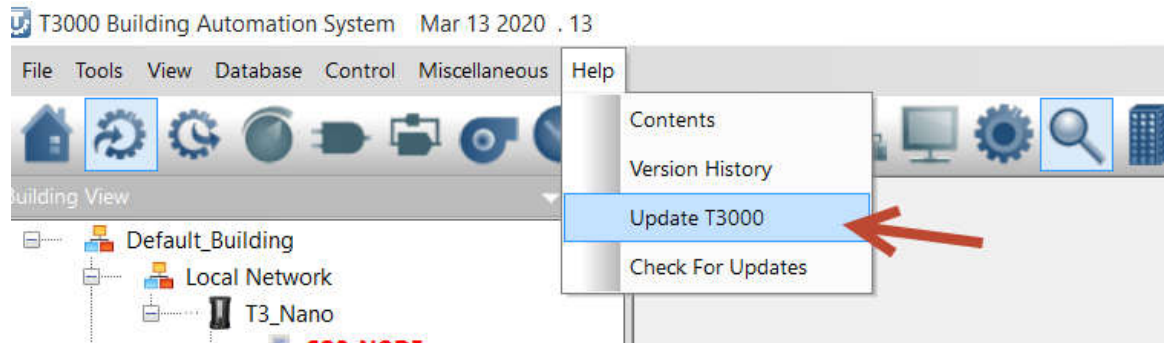
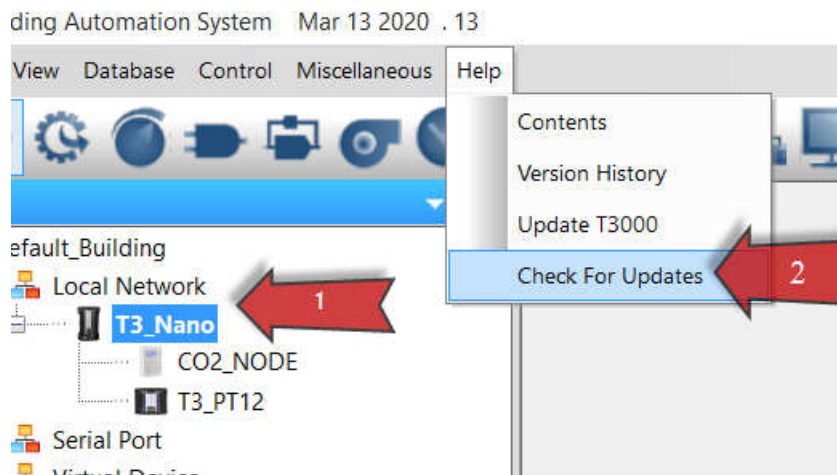
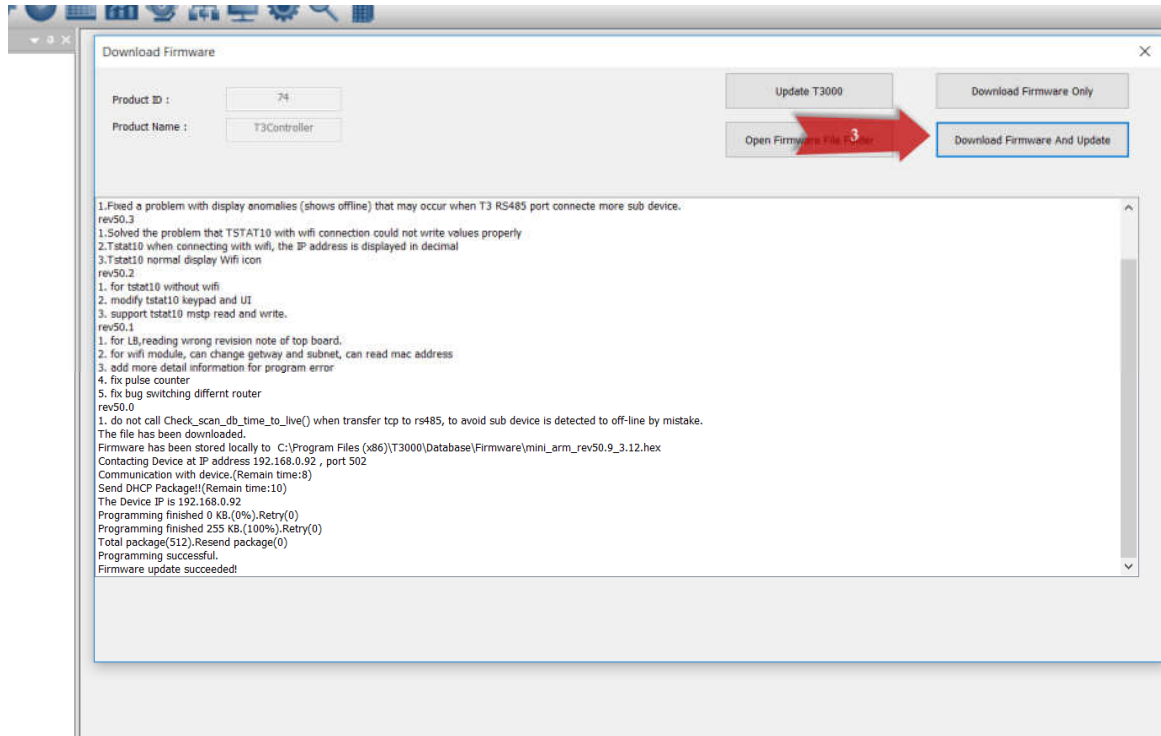


1. Update T3000 to the latest version .



2. Update T3\_Nano to REV50.9 .

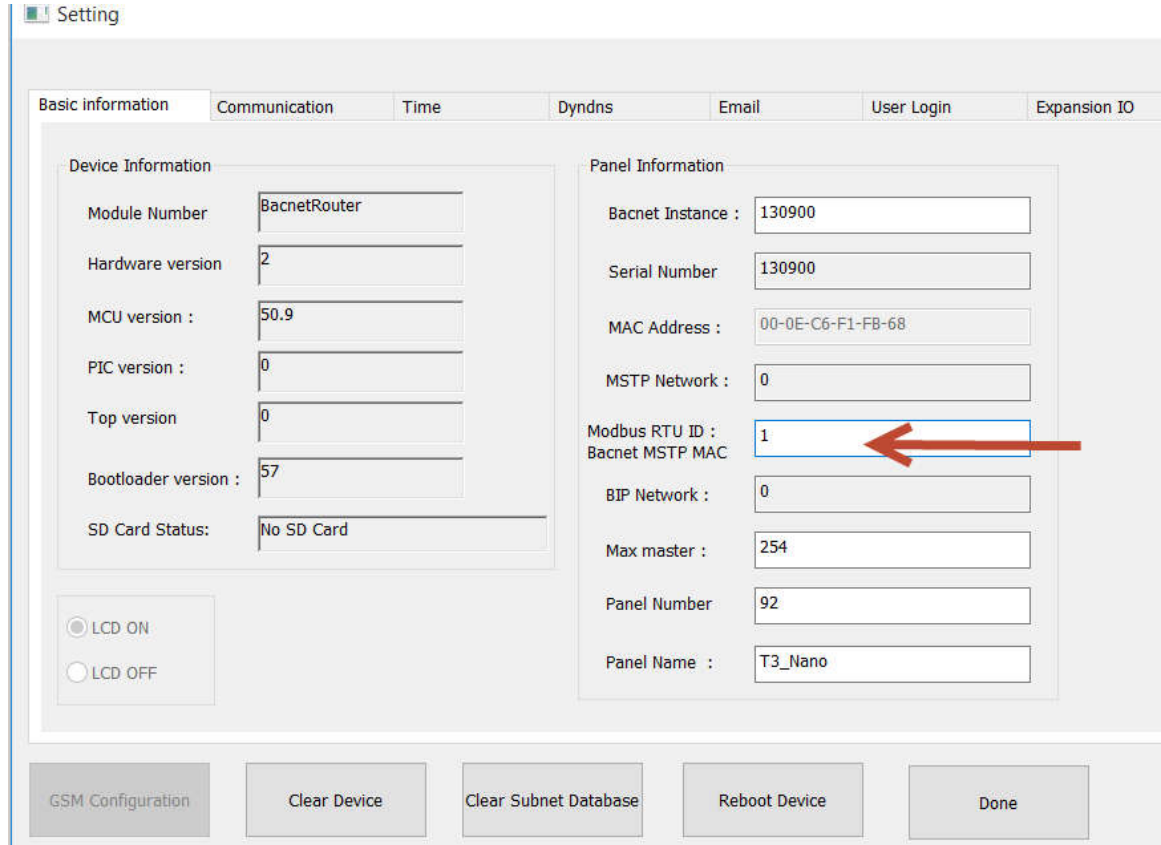
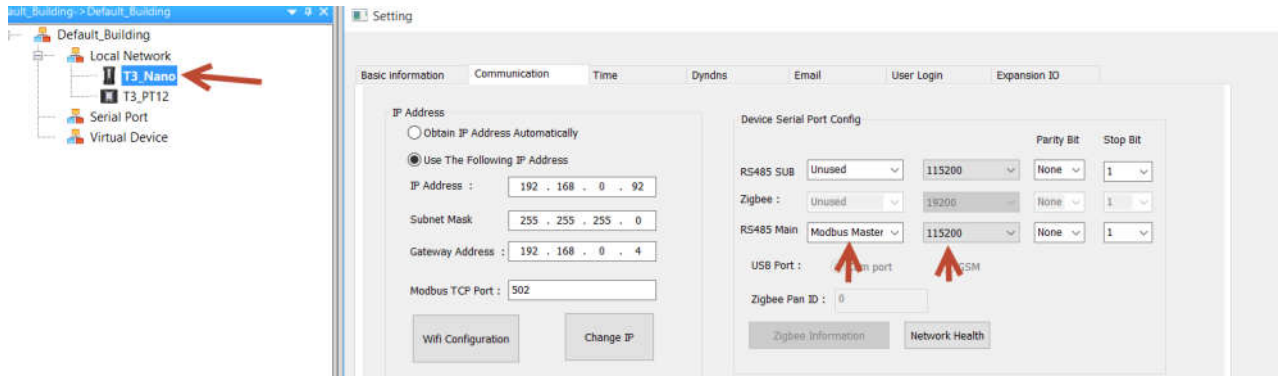




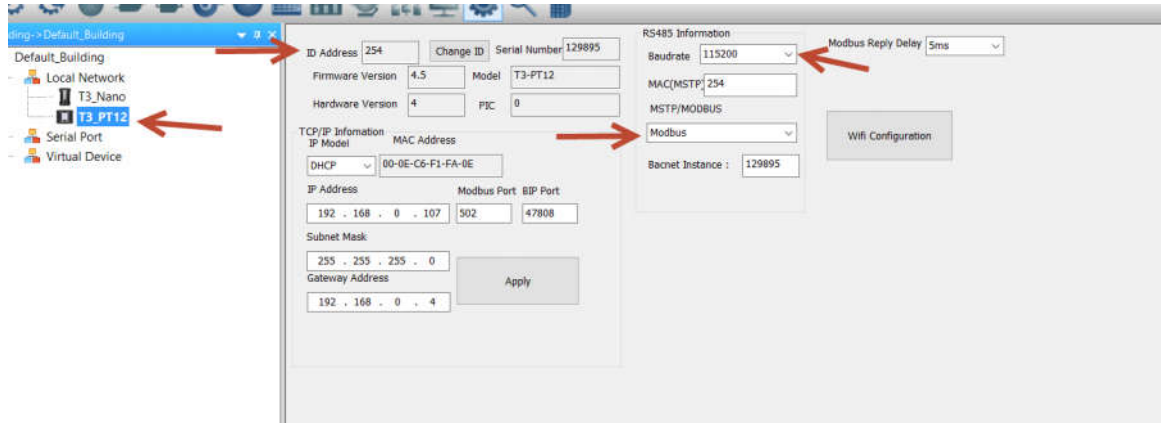
3. T3\_Nano and T3\_PT12 join into your local network , click “discover” button , T3\_Nano and T3\_PT12 will be shown under local network tree .



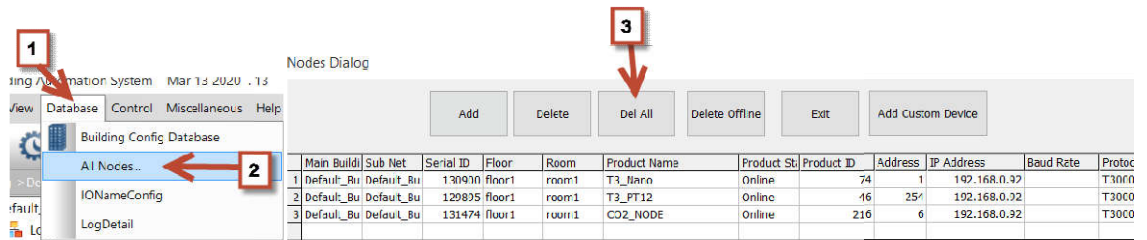
set Nano RS485 Main to Modbus master , baud rate : 115200 ,Default Modbus ID : 1



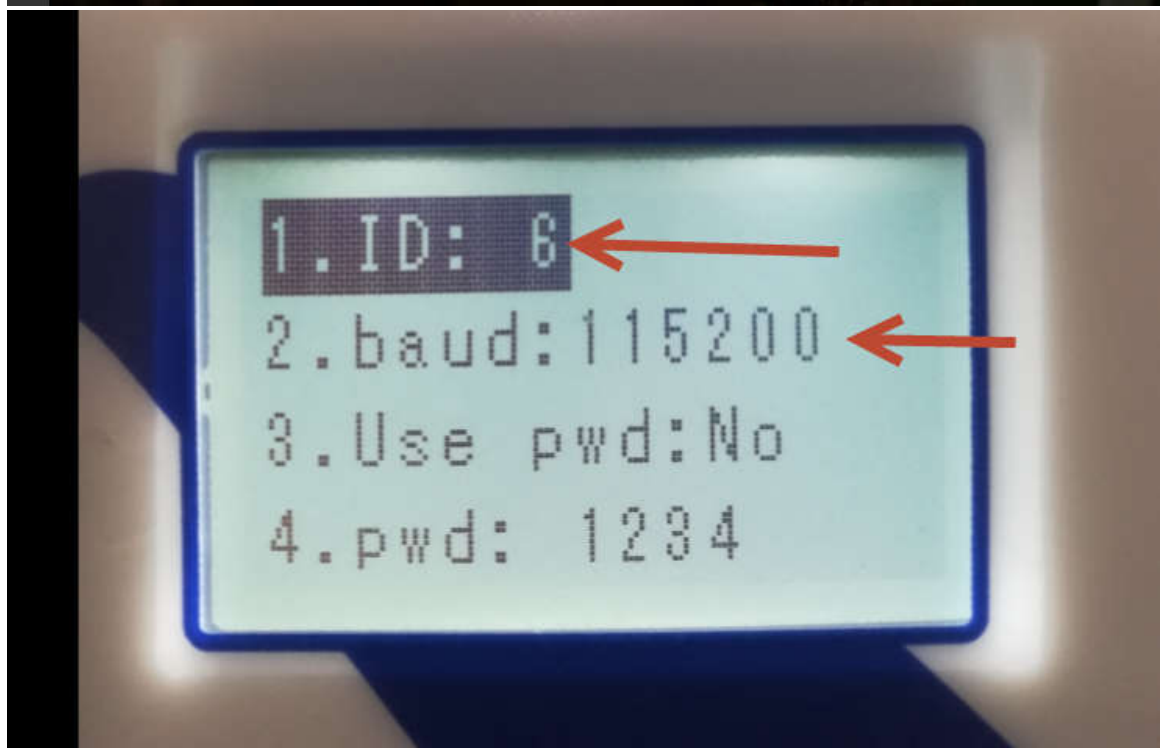
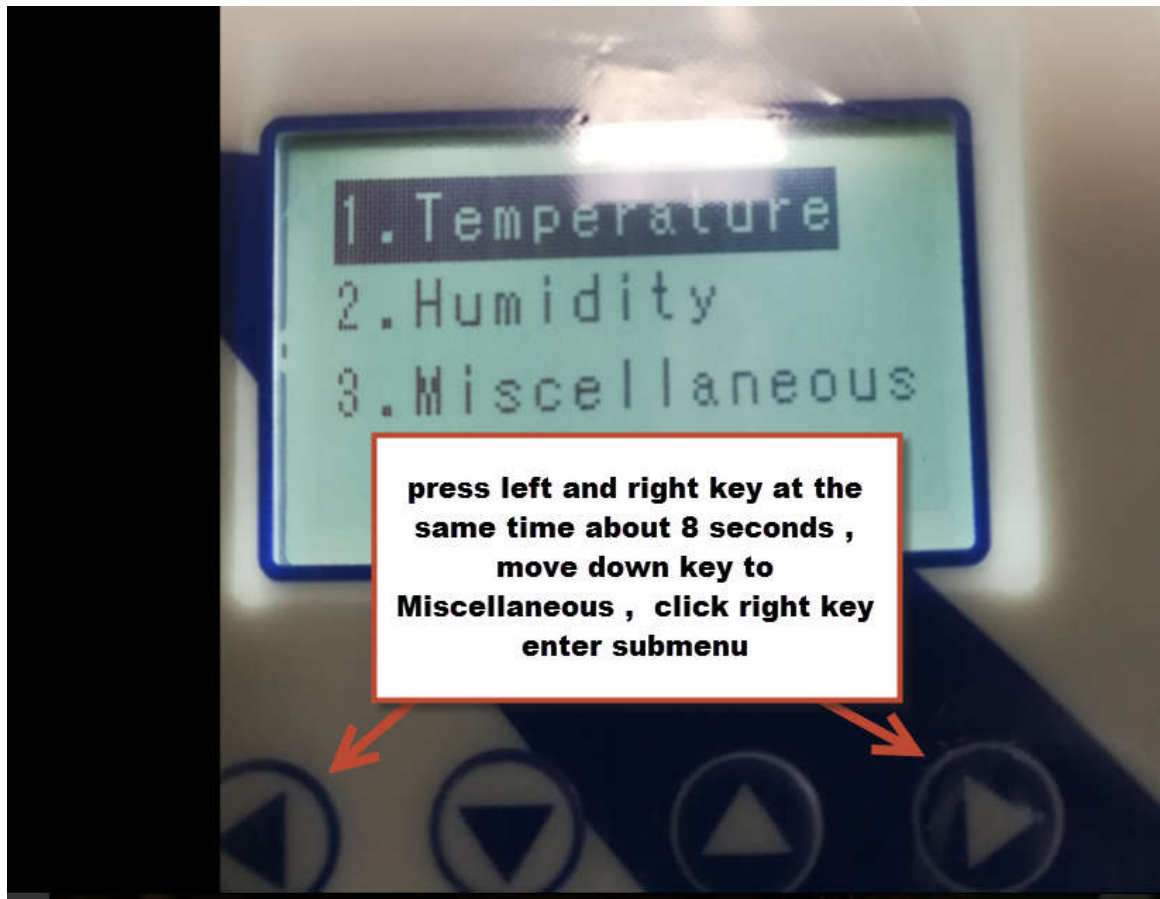
change T3\_PT12 protocol to modbus , baud rate : 115200 ,Default ID: 254 .

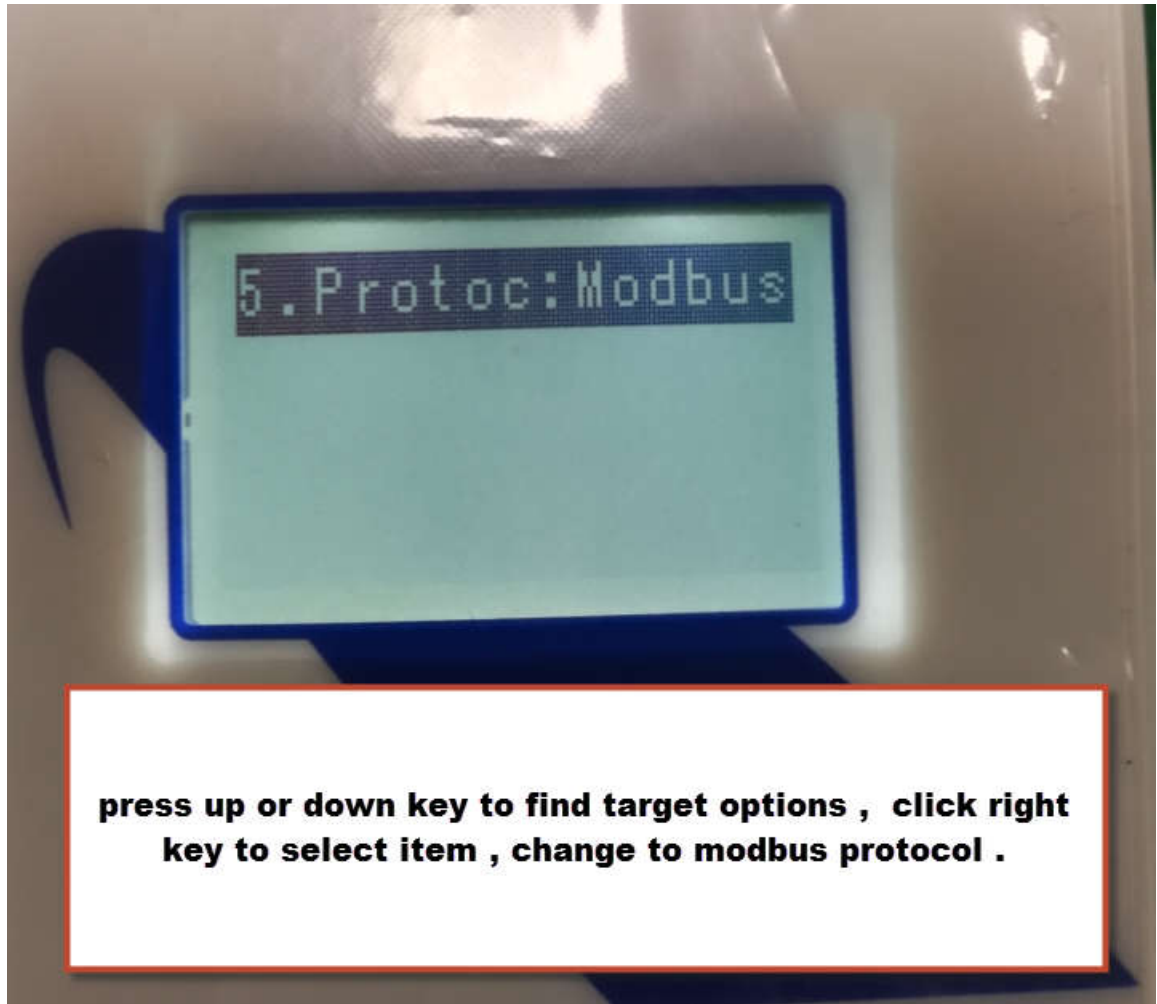


unplug T3\_PT12 network cable , delete t3000 database all nodes .



4. AQ configuration , protocol :modbus , baud rate: 115200 ,Default ID:254 , I changed to ID=6 .





5. Connect PT12 and AQ to Nano RS485 main and click "discover" button , TB,PT12 and AQ are shown under local network tree , you can conveniently control each device .

T3000 is scanning, please wait..

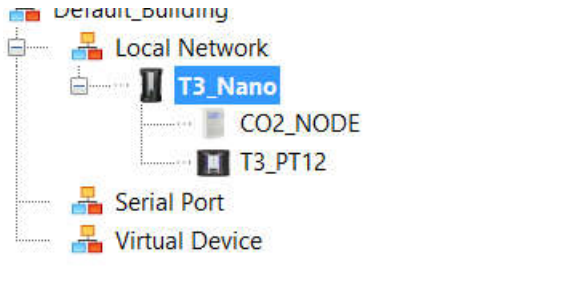
Exit

Scanning Mode	Status	Reply	Notes
Ethernet Scan	Finished	3	Network scan finished.
Bacnet MSTP	Finished	0	
	Wait	0	
	Running	0	Scanning IP 192.168.0.92 'RS485 Sub' Baudrate: 9600 .Scan ID From 1 to 254

Scan Result

SCAN RESULT:

Model	Building	Floor	Room	Sub_net	Serial#	Address	Port	Protocol
T3_Nano	fault_Buildi	Floor1	Room1	Sub_net1	130900	192.168.0.92	502	TCP/IP
T3_PT12	fault_Buildi	Floor1	Room1	Sub_net1	129895	192.168.0.92	502	TCP/IP
CO2_NODE	fault_Buildi	Floor1	Room1	Sub_net1	131474	192.168.0.92	502	TCP/IP



Main Buildi	Sub Net	Serial ID	Floor	Room	Product Name	Product St	Product ID	Address	IP Address	Baud Rate	Protocol	HW Ver	SW Ver	
1	Default_Bu	Default_Bu	130900	floor1	room1	T3_Nano	Online	74	1	192.168.0.92		T3000_Defau	2.0	50.9
2	Default_Bu	Default_Bu	129895	floor1	room1	T3_PT12	Online	46	254	192.168.0.92		T3000_Defau	2.0	50.9
3	Default_Bu	Default_Bu	131474	floor1	room1	CO2_NODE	Online	216	6	192.168.0.92		T3000_Defau	2.0	50.9

- How to load AQ to default Factory mode .  
Modbus poll wirte REG169=259 ,REG170=139,REG178=0 .

Modbus Poll - [Mbpoll1]

File Edit Connection Setup Functions Display View Window Help

Tx = 21: Err = 0: ID = 6: F = 03: SR = 1000ms

	Alias	00160	Alias	00170	Alias	00180
0		10		139		0
1		107		5		0
2		512		0		0
3		128		500		5
4		80		0		105
5		430		1000		20
6		800		0		30
7		250		2000		55
8		500		0		100
9		259		5		200

