

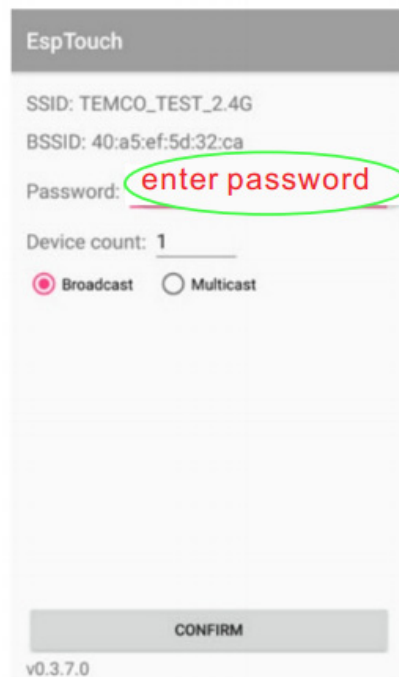
## WIFI configuration setting

There are three methods which are EspTouch, T3000 to set IP address and ADHOC setting

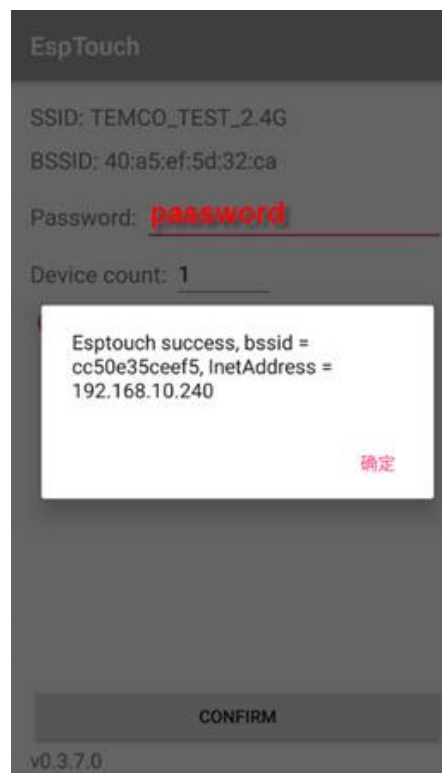
### 1. Set up via EspTouch

First install this app in a android phone and connect your phone with your wifi router, power on Tstat8.

The app will get the SSID from your phone and you need enter the wifi password, click confirm



After about less than 20 seconds, Air Lab will get the IP, and can see the message from phone.



## 2.Set up via T3000

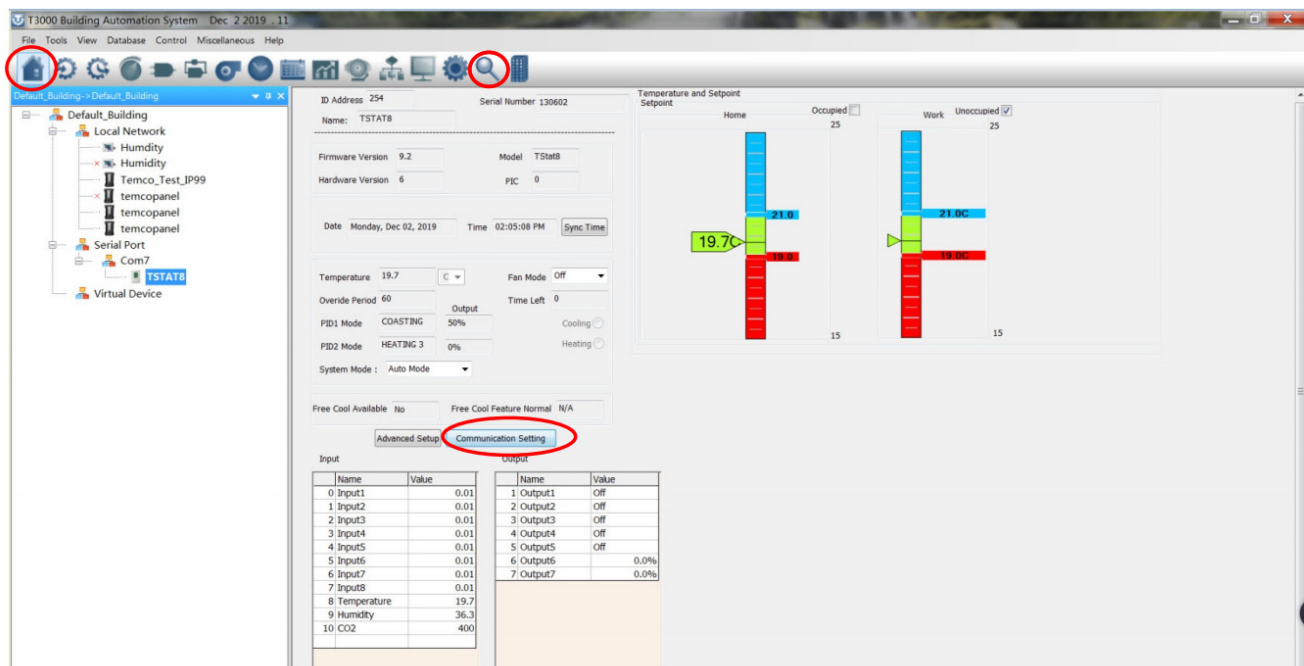
(1) Configure the wireless router and connect.

(2) Visit <https://temcocontrols.com/ftp/software/09T3000Software.zip>, download T3000 software and install it;

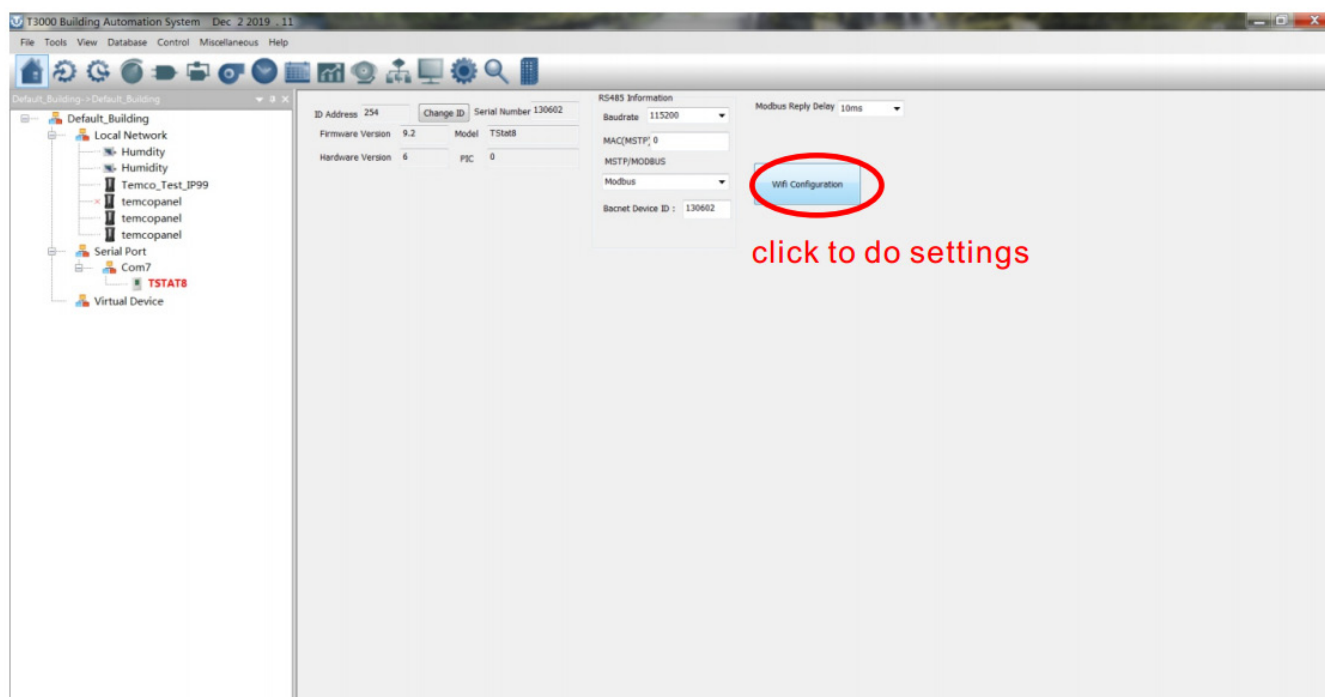
(3) Connect Tstat8 to PC via RS485

(4) Start T3000 software, click  to scan

(5) Click 



(6) Click "communication setting"



## (7)WIFI Setting

