

AAC-PI AAC-PI Quick Start Quick Start



Step 1 - Write the debian Jessie image to the SD card.

We recommend using Raspbian Jessie Lite.

Download the image from <https://www.raspberrypi.org/downloads/raspbian/>

Download the Win32DiskImager from <http://sourceforge.net/projects/win32diskimager/files/latest/download>

Insert your SD Card and then run Win32DiskImager.exe. It should find your SD Card drive or if not select it.

Select the name of the image file and then press write.

Once it completes you are ready to go, insert your SD card into the Raspberry Pi.

Note: The username is pi and the password is raspberry.

Step 2 – Resize the SD

To Resize the SD Card type the following from a command prompt

```
sudo raspi-config
```

Step 3 – Download the CBMS Studio installation package

Type in the following command from the command line to download the CBMS Studio installation package. An internet connection will be required to complete this step.

```
wget www.cbmsstudio.com/uploads/2/7/3/4/27346891/cbmsstudio_1.3.5.1090_armhf.deb
```

Step 4 – Install the CBMS Studio package

Type in the following from the command line to install the package.

```
sudo dpkg -i cbmsstudio_1.3.5.1090_armhf.deb
```

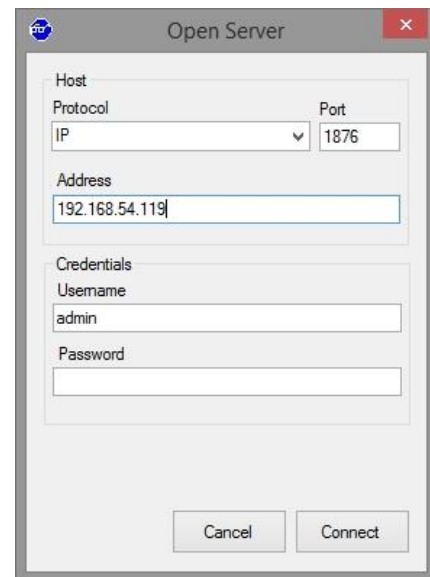


Step 5 - Connect

If you haven't already done so, download and install a copy of the Engineering Tool and then select File - Open to connect to the Raspberry PI.

Make sure you have a monitor connected and take a note of the IP address displayed when the Raspberry PI boots. The default username is admin and there is no password.

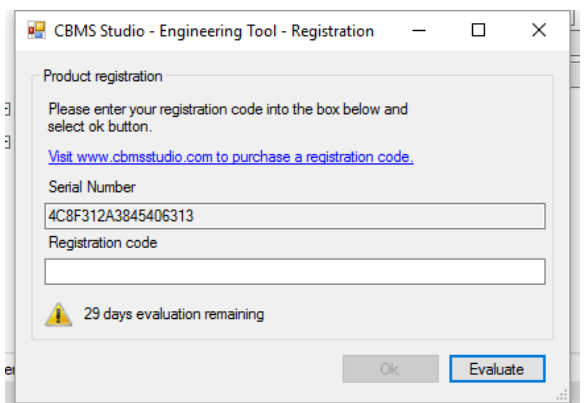
Note : The Engineering Tool is provided free of charge.



Step 6 - Registration

After connecting the CBMS Engineering Tool will display a registration dialog to indicate that the software is running in evaluation mode and the number of days left.

Send an email to sales@cbmsstudio.com with the serial number from the registration dialog to receive a permanent registration code.



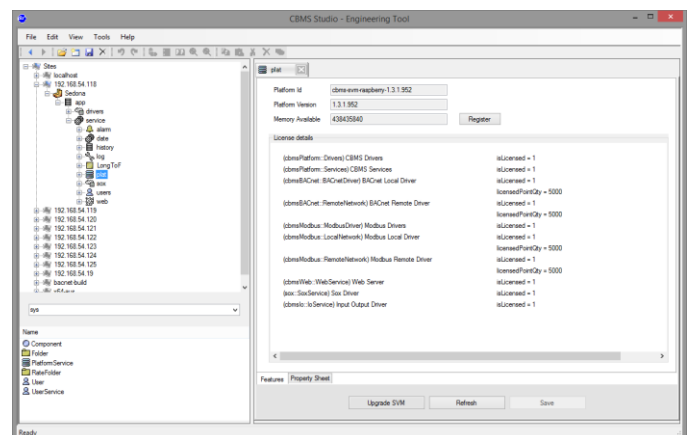
Step 5 - Registration Status

The registration status is displayed in the Platform Component. When you navigate to this component it will display the status, number of days left for evaluation and some other parameters.

You can also set the IP Address from NIC component if required.

The following how to pages are available on the web site at <http://www.cbmsstudio.com/how-to.html>

- How do I use the BACnet Explorer ?
- How do I configure a BACnet IP to MSTP Router ?
- How do I configure a Modbus to BACnet Gateway ?
- How do I configure an OPC to BACnet Gateway ?



AAC-PI

Quick Start



The downloads page for the raspberry pi is password protected.

Step 5. Go to the downloads page at <http://www.cbmsstudio.com/downloads.html> and select the link for the Raspberry PI.

You will see a login dialog box like the one shown on the right.

Select **Register** to create a new account.

Log In | Register

Email Address

Password

Reset password Log In >

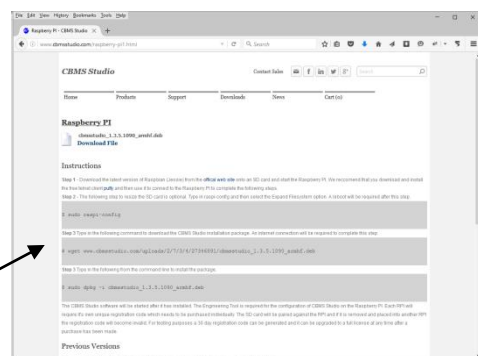
Log In | Register

Name (optional)

timsmith@gmail.com

Register >

Step 6. Enter your email address and a password of your choosing and then press the **Register** button.



Step 7. Notify sales@cbmsstudio.com when you have made a purchase to request access to this page.

Once your access has been provided you will be able to view the CBMS downloads page for the raspberry



AAC-PI

Quick Start

